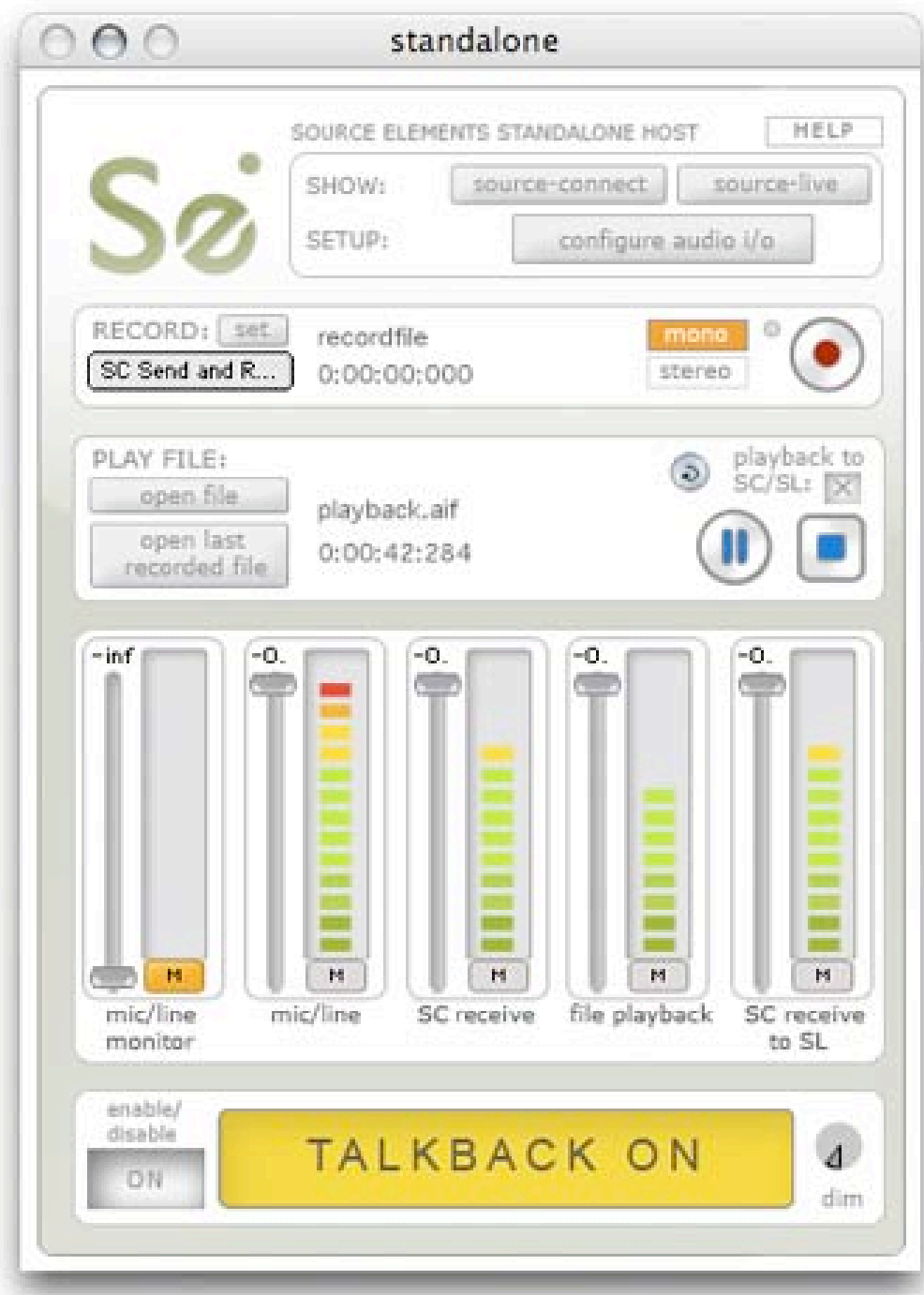


SOURCE ELEMENTS DESKTOP: HELP GUIDE

This document is a supplement to the help guide available from with the Source Elements Desktop application. For a full overview of the interface launch the Desktop application and click on the HELP button at the top. It will bring up this help guide, with interactive tips. Just hover your mouse over the interface to learn what everything does.

Note that you don't need Source-Connect or Source-Live installed to use the program, if you just need to record or play back audio files.

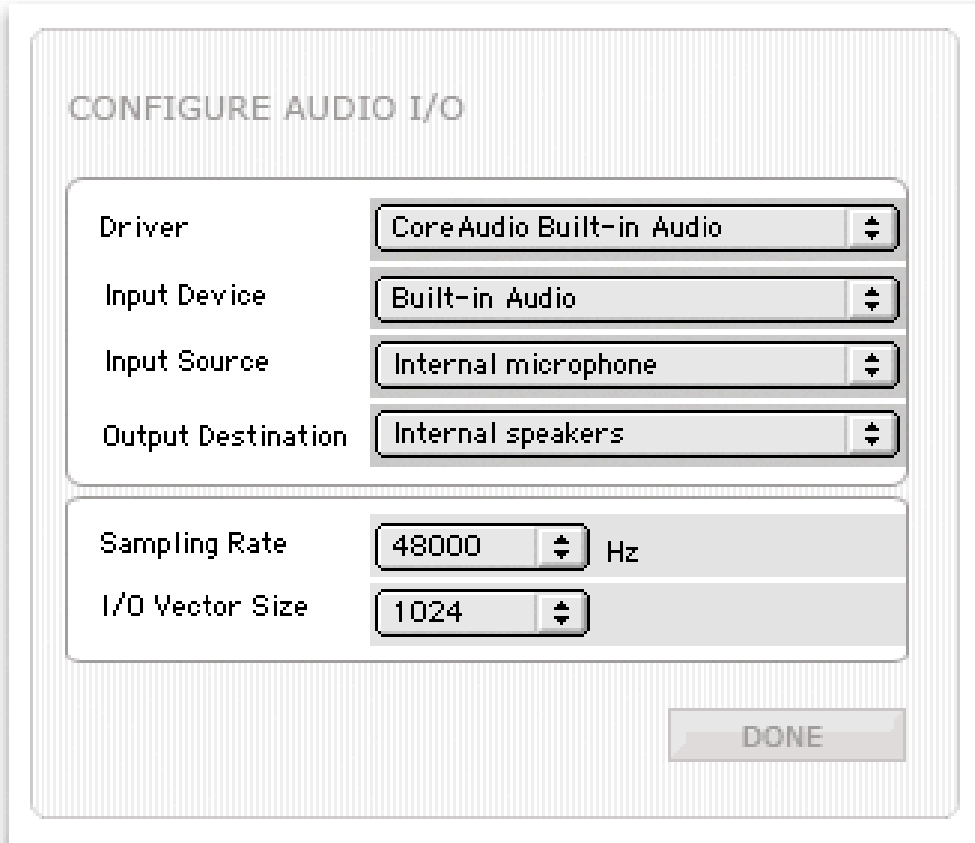


SOURCE ELEMENTS DESKTOP: AUDIO CONFIGURATION

Source Elements Desktop will use any audio hardware available. Open the 'Audio config' window and choose the driver for the audio hardware you wish to use. You may be given other options than those seen below, depending on the hardware drivers you are using.

It is important to note that Source-Connect only supports 44.1 and 48khz, and Source-Live supports 44.1, 48 and 96khz.

Setting your I/O vector size to 512 or 1024 will give optimum results.



CONFIGURE AUDIO I/O

Driver	Core Audio Built-in Audio
Input Device	Built-in Audio
Input Source	Internal microphone
Output Destination	Internal speakers
Sampling Rate	48000 Hz
I/O Vector Size	1024

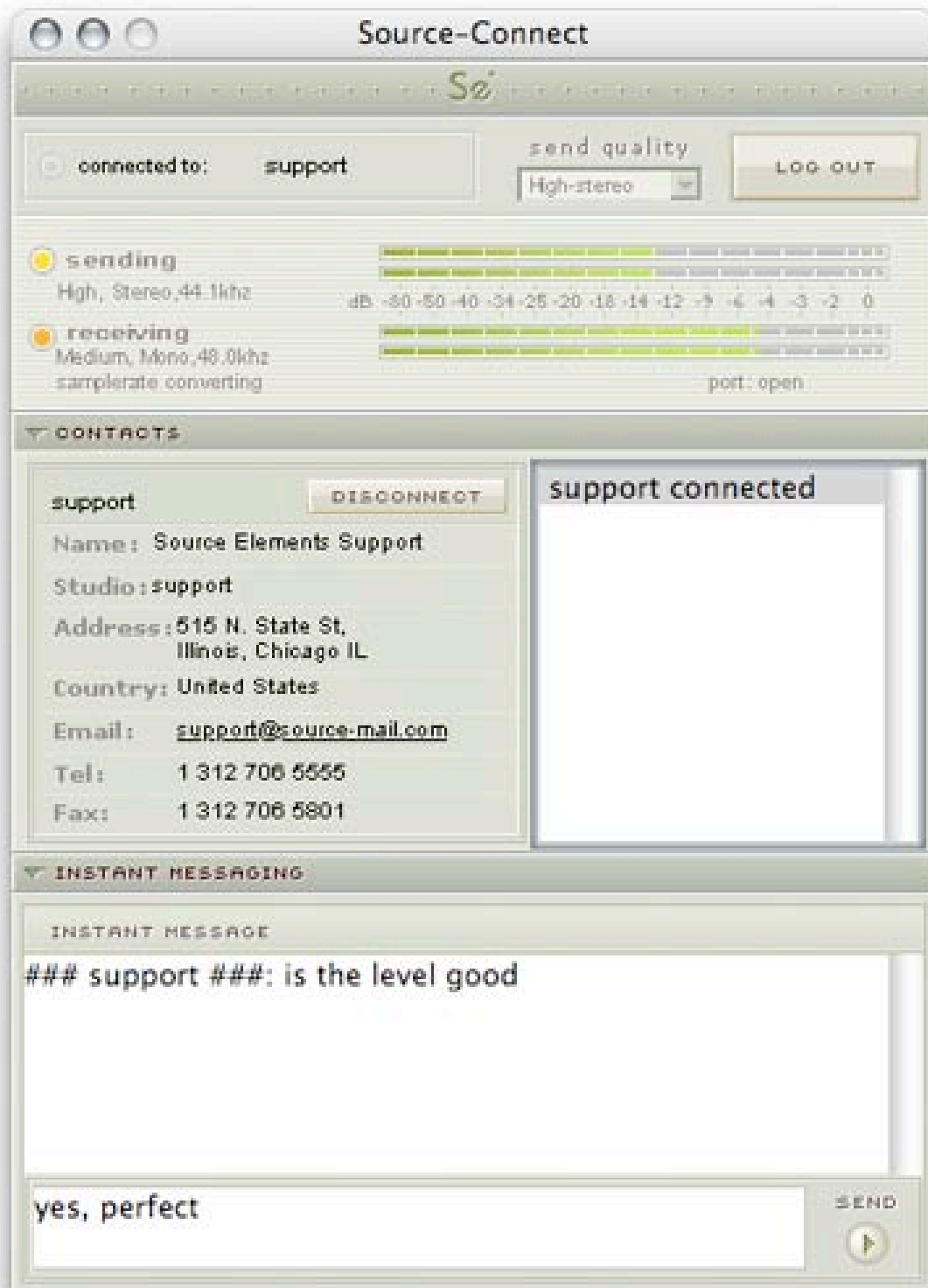
DONE

The Source Elements Standalone program can access any audio drivers available to your system. By default, the input and output will be stereo. If you wish to configure your audio driver setup, open 'Audio MIDI setup' application in your Applications/Utilities folder.

SOURCE ELEMENTS DESKTOP: SOURCE-CONNECT

As for the main interface, open the Help Guide in the application for an interactive overview of the Source-Connect plug-in.

If you are unable to receive a connection, check your network configuration (See the Tech Support website online, or see the 'Basic networking' page of this Help Guide.



SOURCE ELEMENTS DESKTOP: SOURCE-LIVE

As for the main interface, open the Help Guide in the application for an interactive overview of the Source-Live plug-in.

Check that your Network Test is returning successful: if it returns as 'failed' you will be unable to broadcast outside your internal network.



SOURCE ELEMENTS DESKTOP: NETWORK GUIDE

It is impossible to cover every topic regarding network configuration here, however the basic rules are covered below.

For more comprehensive network information, see the Tech support pages and Forum on the Source Elements website.

Basic networking with Source-Connect and Source-Live:

Source-Connect will generally be able to make a connection regardless of your network configuration. If you get the message 'port open' or 'UPnP/PMP' your connection will establish. If you get 'port not mapped', try establishing the connection anyway. You'll know if your connection is successful if the 'receive' light is blinking. If it's not, there is possibly a firewall or complex network configuration that does not allow Source-Connect traffic. If you get 'port failed' it is unlikely that you will be able to make a successful connection due to a firewall.

View the documentation online for more help.

For proper Source-Connect operation, port forward **UDP** ports 6000 and 6001. See the online documentation for information on how to do this.

Source-Live will display either 'successful' or 'failed' for the network test. If successful, you should be now able to broadcast outside your network. If failed, you will need to review the documentation to allow traffic to your computer.

For proper Source-Live operation, port forward **TCP** ports 6000 and 6001. See the online documentation for information on how to do this.

Bandwidth:

Source-Connect and Source-Live are high-quality real-time streaming applications and so require a sufficient broadband connection. Some wireless networks will not be suitable, so where possible connect your computer by ethernet. If you have less than 300kbps up and down, your network may not be suitable.

You can verify your bandwidth by testing your download and upload speed here: <http://www.speakeasy.net/speedtest>.

SOURCE ELEMENTS DESKTOP: TROUBLE SHOOTING

This page mentions some of the common issues you may experience. For further details review the manual for Source-Connect and Source-Live, or visit the Tech Support website at <http://www.source-elements.com/support>

I cannot hear anything from Source-Connect

1. Check your network (see 'Your network')
2. If your 'receive' light is blinking, make sure you are seeing a signal. If so, adjust your audio setup. If you see a signal but still don't hear anything it is a specific issue with your audio. Make sure you can load and play a soundfile.

The audio is glitching

There are two possible reasons for this:

1. Insufficient bandwidth: check that you have sufficient bandwidth to use Source-Connect and Source-Live. You should have at least 300kbps UP and DOWN. Use this website here to check: <http://www.speakeasy.net/speedtest>

2. Your computer may not be fast enough, or have sufficient RAM.

This application works best on more recent Windows PCs, with at least 2ghz CPU. You will also need at least 1GB of RAM. Try playing back an audio file: if you hear the audio break up, it is possible that your computer is not compatible. You can minimize CPU usage by closing the Source-Connect window after making a connection.

When I press 'show' I don't see Source-Connect or Source-Live

1. Make sure you have the VST plug-ins installed. Go to source-elements.com and sign up for an evaluation, or if you already use Source-Connect or Source-Live login to Support and download and install the VST versions.
2. Make sure your iLok has a valid license.
3. If you have the software installed but still don't see Source-Connect, press the '3' key to load the directory you have Source-Connect plug-in installed. Wait a few moments, then press 'show' again.
4. If you have the software installed but still don't see Source-Live, press the '4' key to load the directory you have Source-Live plug-in installed. Wait a few moments, then press 'show' again.